



Onepoint
TechTalk

Decoding AI series

Session 3

How to turn the spotlight on Dark Data with Gen AI

Our awesome speaker

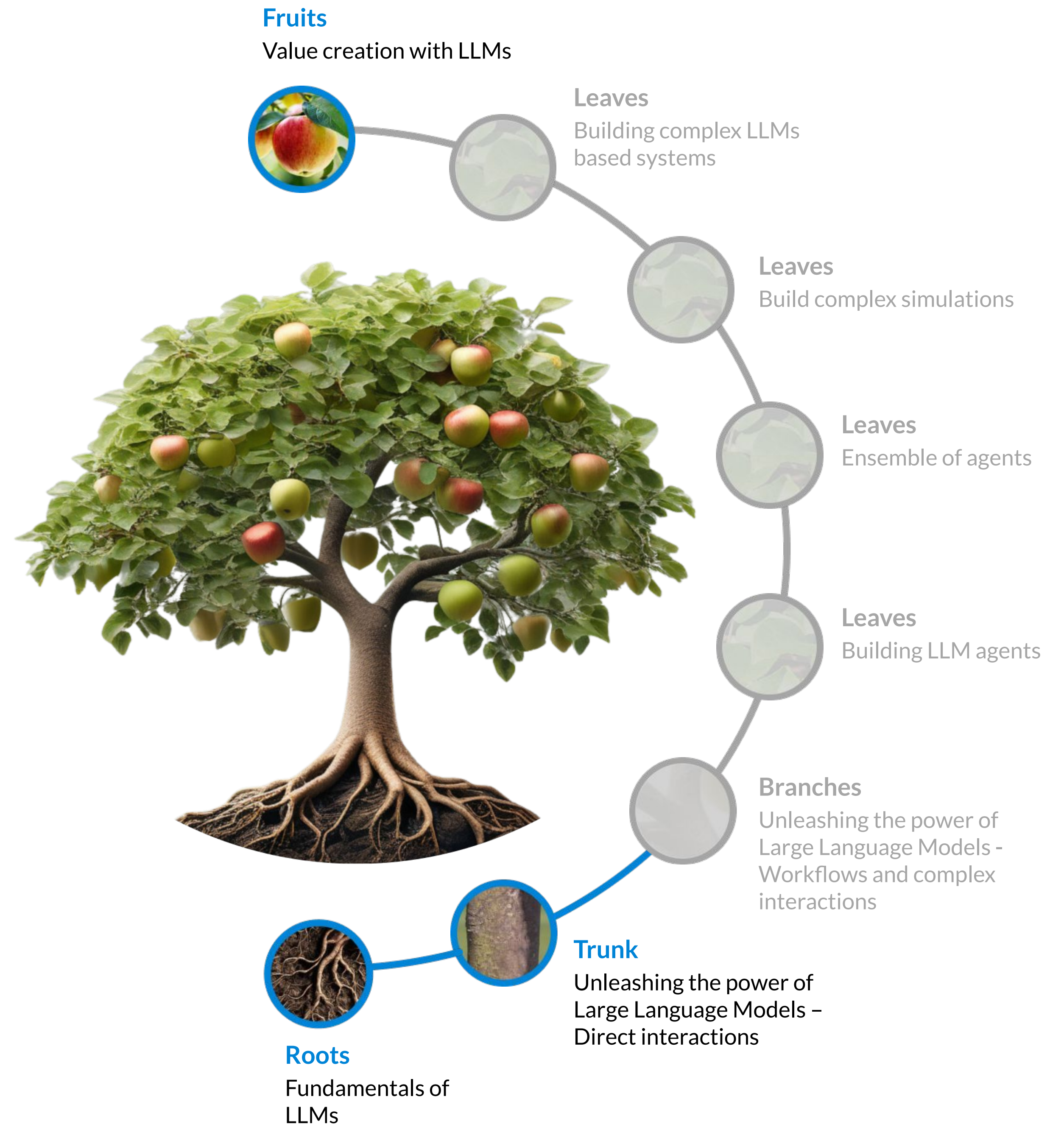


Allan Schweitz
Director of Technology - Services
Onepoint

Welcome

From Roots to Fruits

- Journey to create value from LLMs



Agenda

1. What is Dark Data? 05
2. Why is Dark Data important? 09
3. How can we manage Dark Data? 14
4. Way forward 22
5. Thank you for joining 24

Embrace the dark side

Unlocking the potential of Dark Data (with Gen AI)

What is Dark Data?

What is Dark Data?

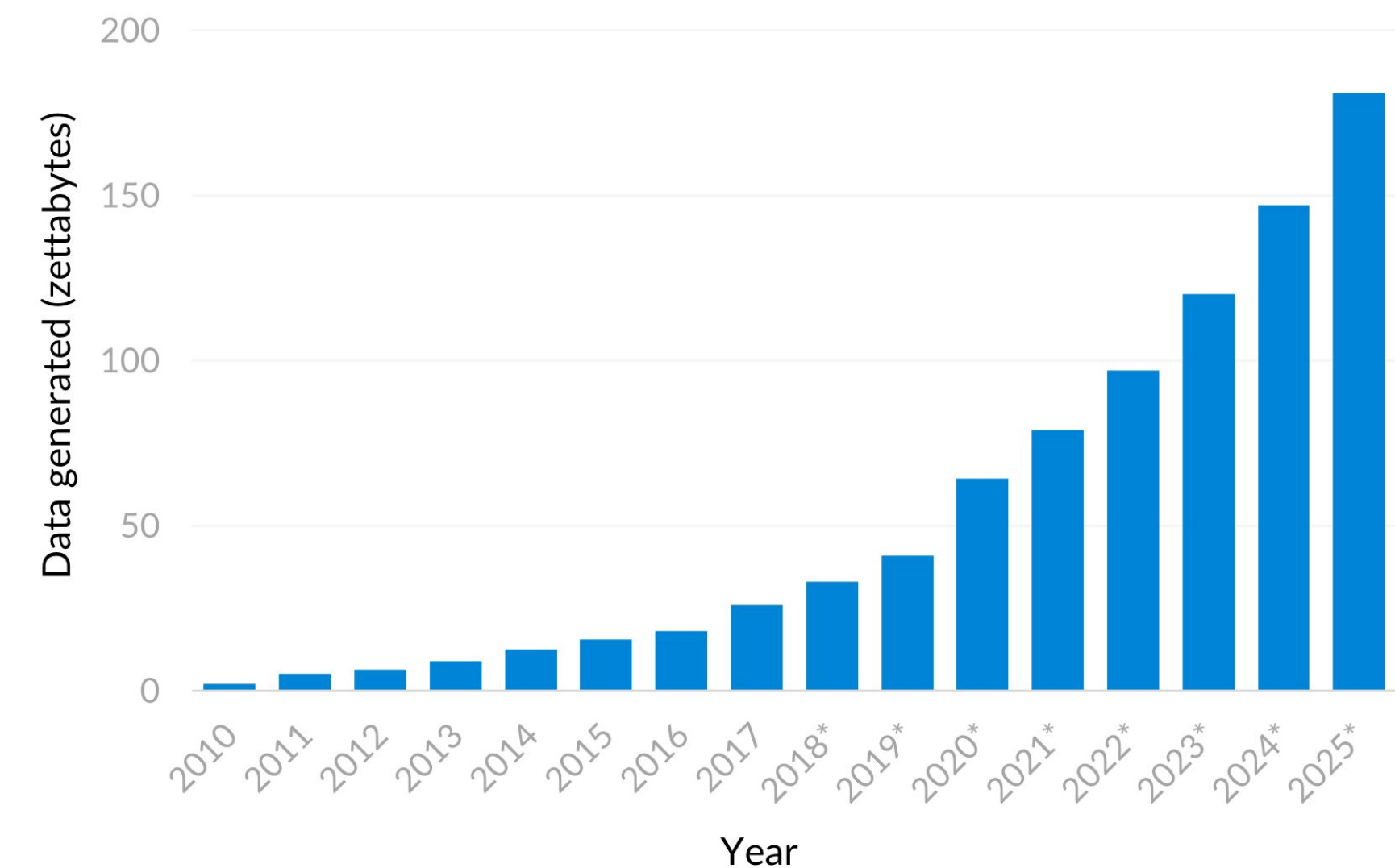
Information assets organisations collect, process and store during regular business activities, but generally fail to use for other purposes.

- IT Glossary Gartner

90%

of the world's data was
created in the last
3 - 4 years

Global data generated annually



Source: Statista, Bernard Marr & Co.

An illustration of an iceberg floating in a dark blue ocean under a starry night sky. The iceberg's tip is above the water, while its much larger, jagged base is submerged. The water is dark with some light reflecting off the surface. The sky is a deep teal with small white stars.

15%

Critical data, used
often by the
business

30%

Redundant,
obsolete and trivial
(ROT) data

55%

Dark Data

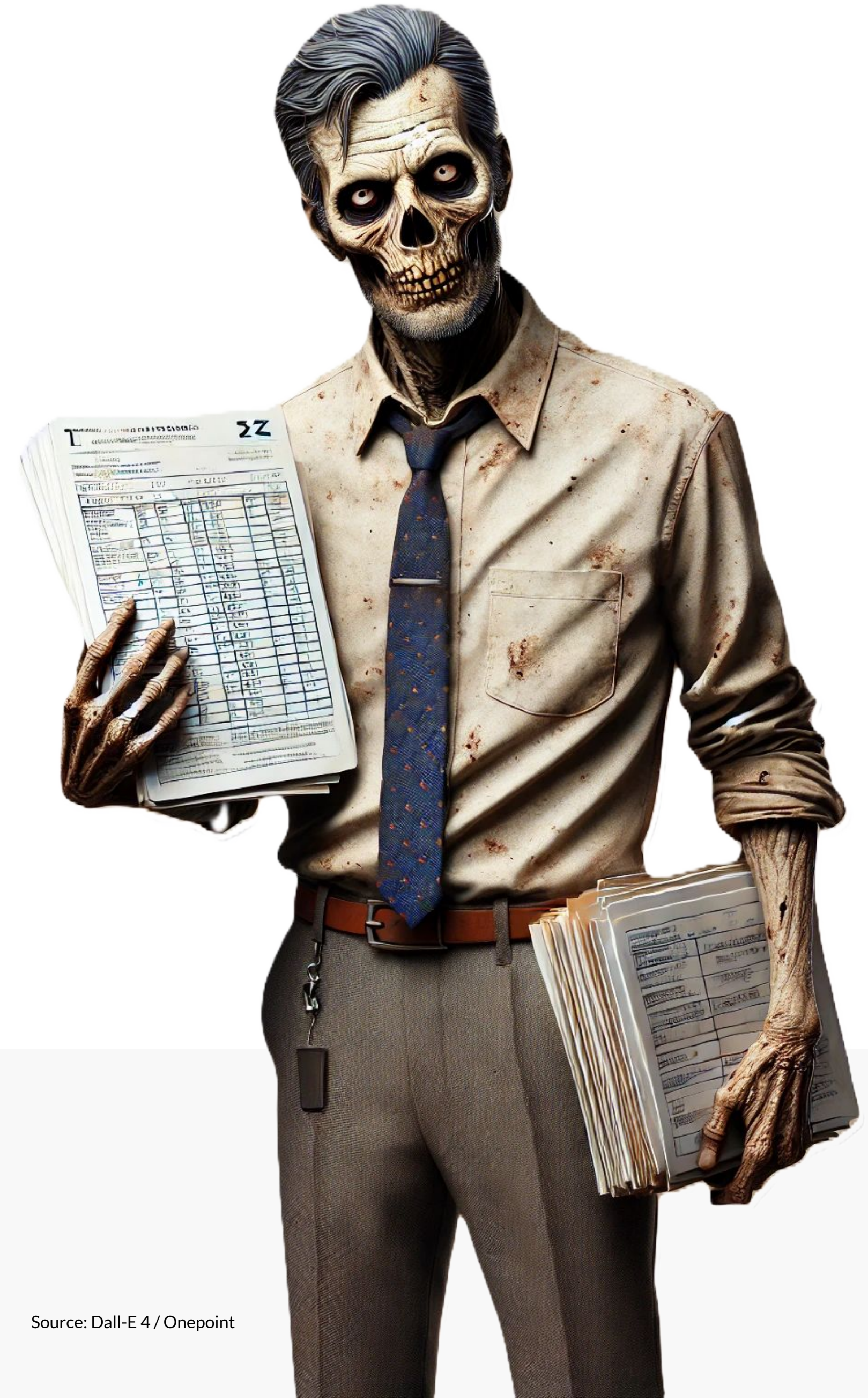
What is Dark Data?

Dark Data types

Digital dust bunnies

Zombie data

The bermuda triangle



Audience poll

What is the biggest challenge your organisation faces when dealing with dark data?

1. Identifying and locating dark data sources
2. Integrating dark data with existing systems
3. Analysing and extracting insights from dark data
4. Ensuring data privacy and compliance
5. Understanding the potential value of dark data
6. Other
7. No challenges
8. No idea

Why is Dark Data important?

Why does Dark Data matter?

Insights

Innovation

Competitive advantage

Risk management

Data Governance and Data
Management maturity



Source: Dall-E 4 / Onepoint

Out of sight, out of mind —
Until it's not.

Why is Dark Data important?

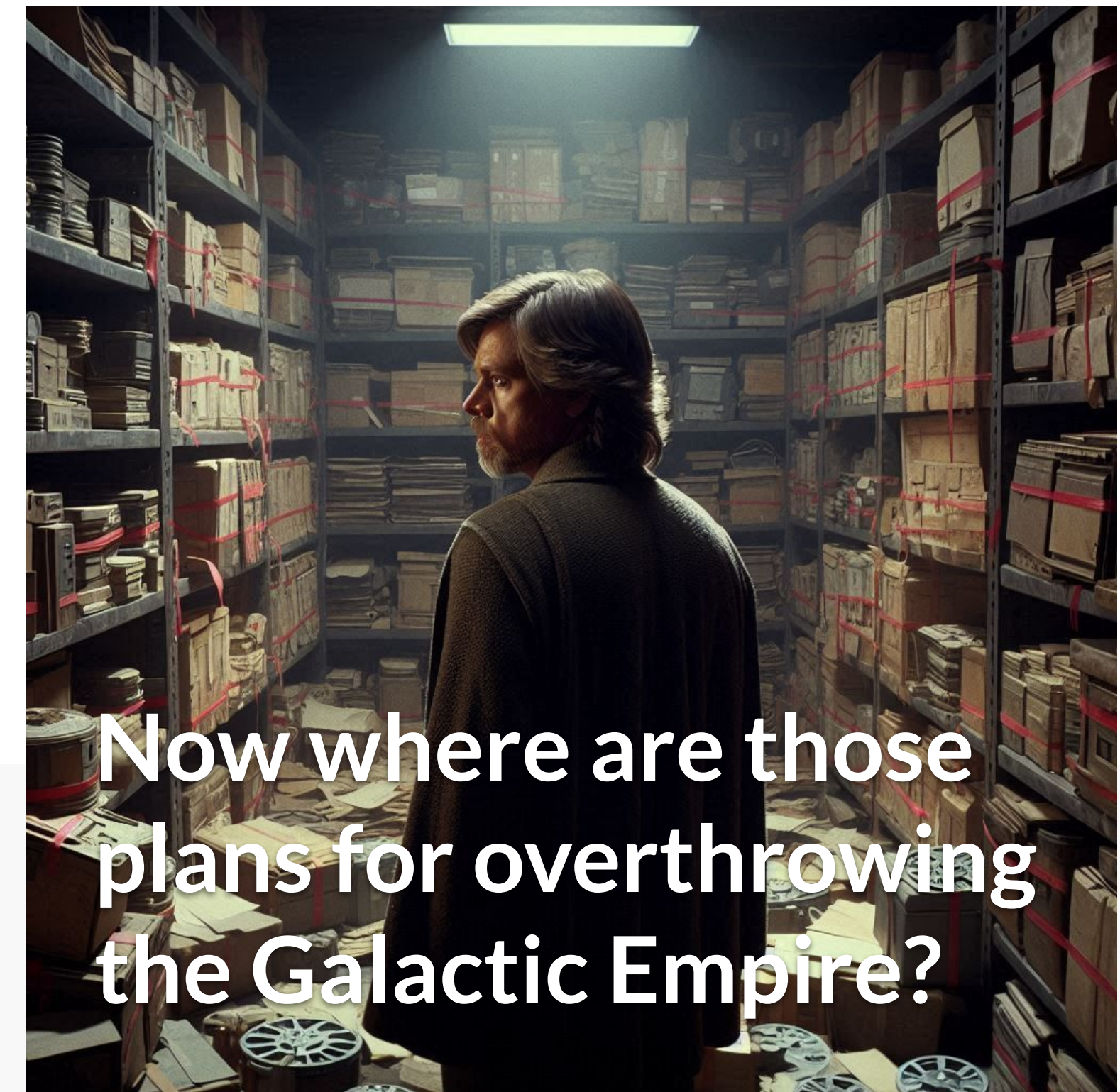
The risk that Dark Data poses

High costs -
storage & inefficiency costs

Security risks

Compliance violations

Creates a data swamp



**Now where are those
plans for overthrowing
the Galactic Empire?**

Source: Dall-E 4 / Onepoint

Why is Dark Data important?

Why does data turn to the dark side?

Lack of awareness

Lack of data governance

Legacy systems

Changing business priorities

Data stuck in silos

Fragmentation

Data is unstructured

Quality issues

Regulatory compliance

Volume

Dark Data: The Rise of Gen AI

How can we manage Dark Data?

Gen AI is the new lightsaber companion of every Data Jedi Master

Understands natural language

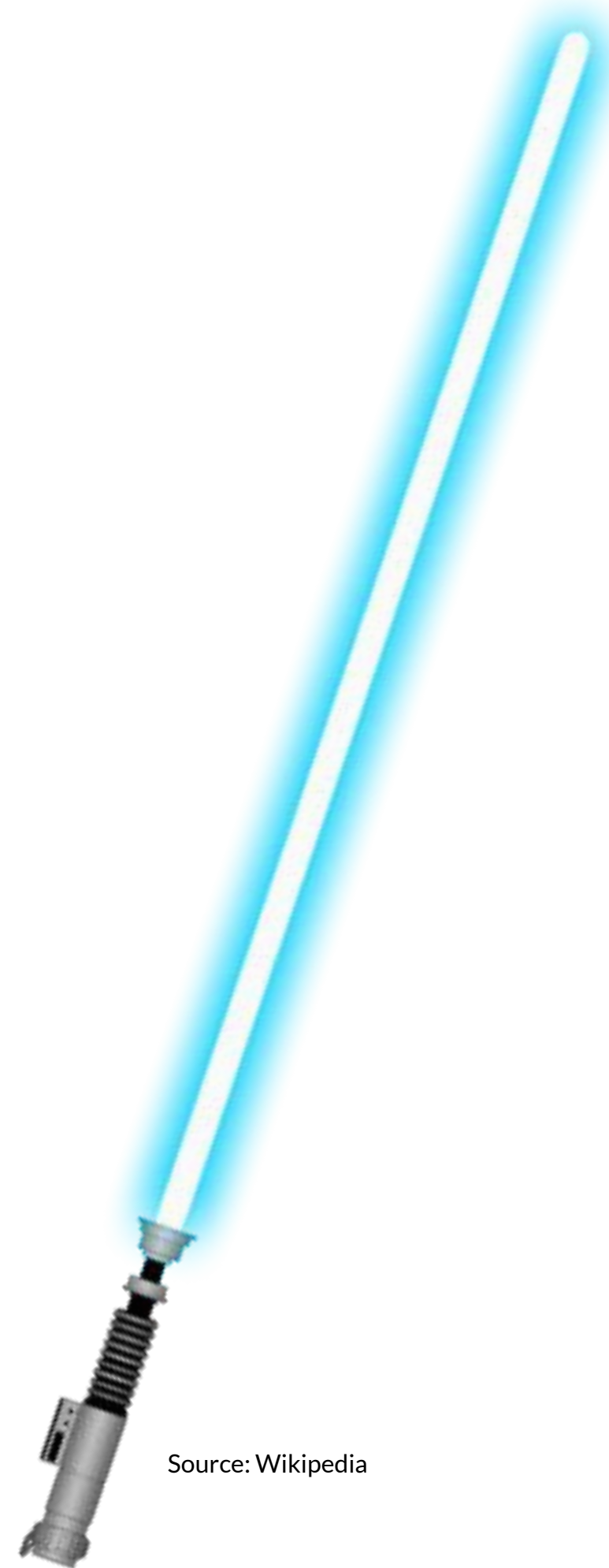
Can create structure out of unstructured data

Great at analysing large amounts of data and recognising patterns

Can learn new tricks

Does not complain or ask for coffee breaks

It's also smarter than your average Stormtrooper



Source: Wikipedia

How can we manage Dark Data?

Bringing Dark Data back into the light

Strategies

A change of (data) culture

A robust Data Lifecycle Management strategy

Break down silos

Raise awareness



How can we manage Dark Data?

Bringing Dark Data back into the light

Tactics - AI powered

Automated data discovery and classification

Information extraction from unstructured data

AI-powered (real-time) data governance and data lineage

Automated cleansing, standardisation and enhancement of data

Advanced analytics and insights generation

RAG - Retrieval Augmented Generation

How can we manage Dark Data?

Some techniques for unlocking Dark Data (1 of 2)



AI automated data discovery

- AI-powered scanning of databases, file systems, and data lakes



Automated cleaning, standardising and enhancing of data

- Imputation
- Normalisation
- Error detection with automatic remediation
- Data augmentation

How can we manage Dark Data?

Some techniques for unlocking Dark Data (2 of 2)



Advanced analytics and insights generation

- Anomaly, threat detection
- Visualise data
- Report generation
- AI-driven quality assessment
- Noise reductions



AI-powered data governance and compliance

- Automated data lineage
- AI-driven data masking
- Intelligent data policies

Audience poll

Which aspect of dark data do you believe holds the most untapped potential for your organisation?

1. Operational Data (e.g., server logs, transactional data)
2. Communication Data (e.g., emails, customer service records)
3. Unstructured Data (e.g., documents, images, video)
5. Something else
6. We haven't explored dark data yet
7. Don't know

How can we manage Dark Data?

Real-world examples



Travel company -
business travel division

- Data subject to regulatory compliance turned dark



Telco

- Dust bunny log files transformed into valuable gold nuggets

How can we manage Dark Data?

Risks and ethical considerations



Privacy concerns

- Ethical implications of using dark data
(e.g., data that was collected without informed consent)
- Accessibility



Transparency

- The need for transparency in how dark data is used



Retention

- How long is dark data stored

Way forward

What does the future hold?

Even more (dark) data will be generated

Changing (stricter) compliance policies

AI is getting smarter

Data tooling is getting better - more AI features and integration



Source: Dall-E 4 / Onepoint

Way forward

Conclusion

AI is a powerful tool for unlocking the potential of Dark Data

Embrace AI to discover, analyse, and leverage Dark Data

As AI technologies evolve, the opportunities to unlock value from Dark Data will only grow

Thank you for joining

Please feel free to contact Allan Schweitz if you have any feedback about the session.



Email at techtalk@onepointltd.com

Connect on LinkedIn www.linkedin.com/in/allanschweitz



Onepoint
TechTalk



Session 4

Unleashing the power of Large Language Models

Part 2 – Workflows and complex interactions

Tuesday, 17 September 2024 | 11:00 UK | 12:00 CEST

Our awesome speaker



Gil Fernandes
AI Solutions Engineer
Onepoint



Branches
Unleashing the power of Large Language Models - Workflows and complex interactions

Scan the QR code or visit
www.onepointltd.com/techtalk/unleashing-the-power-of-large-language-models-part-2-workflows-and-complex-interactions

Onepoint is a **boutique,**
values-driven,
business-oriented
technology consultancy.

We **architect, prototype, build, and manage** data and AI powered solutions. We partner with global clients looking for high-impact, enterprise-grade advice and IT services to realise their most critical digital transformations.

London | Manchester | Pune

Onepoint

Your trusted companions for the digital journey™



onepointltd.com

hello@onepointltd.com



© Copyright 2024. Onepoint Consulting Ltd is a company registered in England.
Company registration number 5516457. VAT registration number GB866120039.
ISO27001 certified. Certified in the UK as an ethnic minority-owned business.